



EVERGREEN

country day

STRATEGIC PLAN: VISION 2021



PREPARING
STUDENTS TO
THRIVE



A blue-tinted photograph of a man and two young children in a library. The man is in the center, smiling and looking down at a book held by one of the children. The child on the left is also looking at the book. The child on the right is looking down at something in their hands. In the background, there are bookshelves filled with books. Some book spines are visible, including one titled 'THE GREEK GODS' and another with 'Animals' and 'Snow Leopards' on it.

“50 years of
inspiring young minds
to make a difference
in the world”

A NOTE FROM OUR HEAD OF SCHOOL

In 2021 Evergreen Country Day School will celebrate 50 years of inspiring young minds to make a difference in the world. Established in 1971 as Evergreen Creative Pre-School, our school began with the steadfast belief that the cultivation of creativity via active, student-centered teaching and learning within a physically and emotionally safe, relationships-first community was the most compelling way to inspire students to thrive. Such was our belief in 1971, and such is our belief today.

Our new strategic plan builds upon our exciting past and extends our aspirations to new vistas of opportunity. In this spirit, our Board of Trustees enthusiastically adopted our school's new strategic plan. Crafted with great care and invaluable input from our entire community, our strategic plan's implementation is scheduled to start immediately and will culminate with our 50th anniversary in 2021. I invite you to explore within these pages our community's aspirations, noting that our plan seeks to engage each of our school's supporting pillars: academics, character, community, safety, and individuality.

Transforming our school's high hopes into an inspiring reality will take each community member's input, energy, resources, and unwavering commitment to continual improvement and progress. I look forward to seeing all we accomplish together on behalf of our students and to witnessing the world that will benefit from their heads, hands, and hearts.

Here's to 2021 and to our celebration of 50 years of inspiring, equipping, and empowering students to thrive and to live lives of peace and purpose. Rest assured that because of our efforts, students will love to learn and learn to love, both today and for generations to come.

Respectfully,

A handwritten signature in blue ink, appearing to read 'Brad Davies', with a stylized flourish at the end.

Brad Davies
Head of School

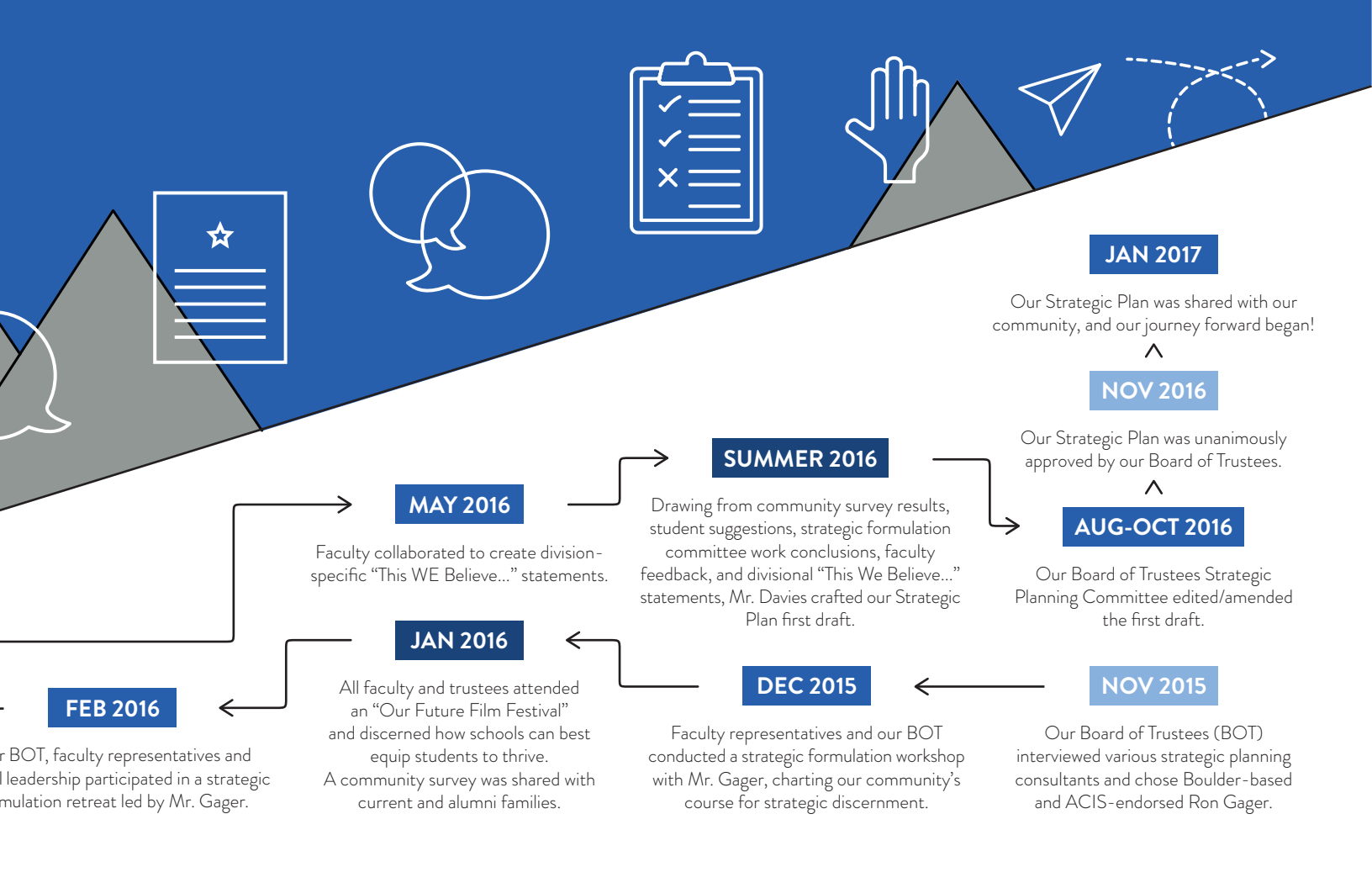
OUR JOURNEY



MAR 2016

Nest, elementary, and middle school faculty crafted educational “This I Believe...” statements and shared with colleagues.

Our school formed





INDIVIDUALITY

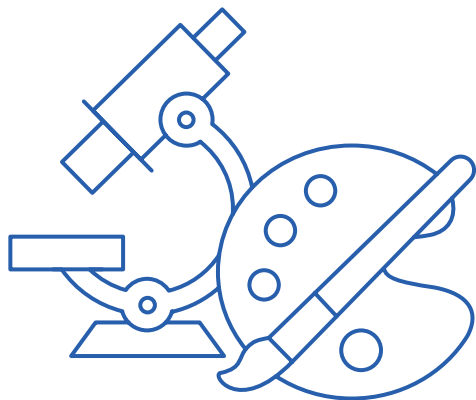
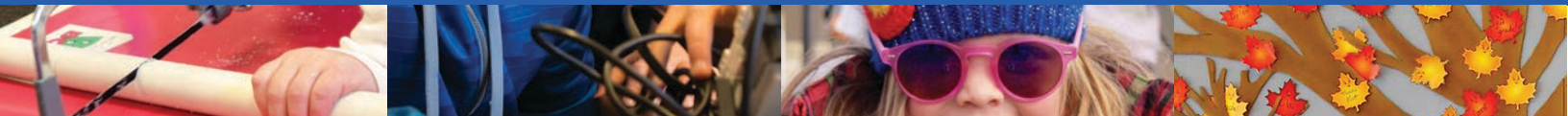
Like the snowflakes that we hold sacred in our state, each child is miraculously unique. Each child learns differently. Each child has their own passions and dreams. Each child has their own strengths. Each child has their own challenges. Each child loves and receives love in their own nuanced ways. Perhaps Dr. Seuss said it best:

“Today you are You,
That is truer than true.
There is no one alive
who is Youer than You.”

At Evergreen Country Day we embrace our students' individuality and cherish the opportunity to connect with each child as the one-of-a-kind miracle that they are. As a result, our strategic plan seeks to weave our emphasis on individuality throughout each of the other four supporting pillars, aiding our efforts to honor and hone every step of the way the unique gifts our students have to offer the world.



OUR ASPIRATIONS



ACADEMIC EXCELLENCE



COMPASSIONATE CHARACTER



COMPELLING COMMUNITY



EXCEPTIONAL SAFETY

When our school's journey began nearly 50 years ago, global change was incremental and human connection was cultivated primarily in person. Today's world is dramatically different. Today our students are growing up during the most dynamic chapter of Earth's existence, they have the sum of human knowledge at their fingertips, and they function within a global community that is more connected and interconnected than ever before. The Academic Excellence component of our strategic plan is the result of the intentional examination and embrace of curricula and pedagogy designed to provide our students with a learning paradigm that will position them to thrive within our rapidly changing and perpetually plugged-in world.



ACADEMIC EXCELLENCE

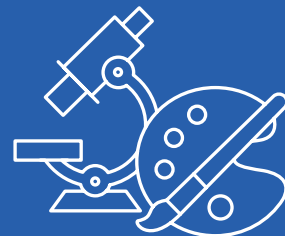
Become among the best at inspiring, equipping, and empowering students to thrive and to live lives of peace and purpose.

SHORT-TERM GOALS

- Earn Re-Accreditation and address ACIS recommendations
- Implement regular review of academic programs
- Modify academic schedule for improved learning opportunities
- Expand enrichment & learning support programs
- Expand STEM/STEAM learning

LONG-TERM GOALS

- Create a Task Force to conduct a high school feasibility study
- Create a Task Force to design Campus 2.0:
 - > Build multi-purpose facility
 - > Integrate the Nest with main campus
- Execute 50th Anniversary Capital campaign





COMPASSIONATE CHARACTER

Make the character of Evergreen Country Day students as well known as academic excellence.

The world needs our graduates to do well by doing good, to leverage their abilities and passions for the benefit of others. To empathize is to understand and to feel what another is feeling. Compassion is empathy in action, the movement beyond mere sentiment to impactful deed. The Compassionate Character component of our strategic plan underscores the importance of cultivating others-oriented character within our students, thereby ensuring that the content of their character, to borrow Dr. King's words, is as conspicuous as their academic acumen.

SHORT-TERM GOALS

- Implement Journeys program across all ages
- Expand experiential learning opportunities
- Develop school-wide character education philosophy and program

LONG-TERM GOALS

- Initiate planning and strategy for global citizenship program





COMPELLING COMMUNITY

Ensure that community remains a compelling cornerstone of the Evergreen Country Day experience.

As a community we seek to connect authentically with one another, to grow together, to laugh together, to learn together, to play together, and most importantly, to work together to make a difference in the lives of our children and thereby the world. The Compelling Community component of our strategic plan seeks to cultivate further the crucial role community plays in inspiring, equipping, and empowering our students to thrive and to live lives of peace and purpose.

SHORT-TERM GOALS

- Improve school communications
- Improve community-building events for families
- Create and utilize annual community and young alumni surveys
- Implement Advancements/Admission best practices to optimize enrollment and diversity

LONG-TERM GOALS

- Create an environmental sustainability plan
- Continue to establish and to build relationships within the broader Evergreen community
- Strengthen school financials by reducing debt and growing auxiliary revenue





EXCEPTIONAL SAFETY

Ensure exceptional physical security and safety measures while enhancing social and emotional safety for all students.

Students thrive in predictable, secure, and caring environments. In a world where safety has proven paramount and where schools wrestle with unkind behavior that compromises student growth, we seek to be a leader in both physical and emotional safety. The Exceptional Safety component of our strategic plan renews our resolve to ensure that our community is shielded from harm and that our campus culture is characterized by kindness by all and to all.

SHORT-TERM GOALS

- Implement updated crisis communication system
- Improve student discipline program
- Address near-term safety improvement opportunities

LONG-TERM GOALS

- Conduct a comprehensive campus safety review
- Integrate safety priorities into Campus 2.0





1036 EL RANCHO RD, EVERGREEN, CO 80439 • WWW.ECDSCHOOL.ORG • (303) 674-3400